



LABELLE SUPPLY CO. LTD.

Serving the shoe trade since 1948

7278 Curragh Avenue, Burnaby, British Columbia, Canada V5J 4V9

Tel: 604-253-6301 Toll Free: 1-800-663-9893 Fax: 604-253-7253

Website: <https://labellesupply.com> E-mail: llabelle@shaw.ca



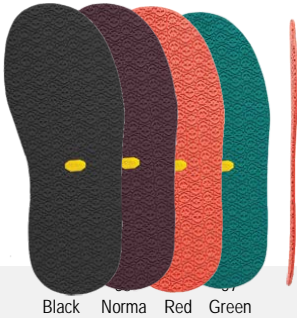
MEGAGRIP

SKULL | 669KS

Skull pattern
Vibram rubber sole.
Easy processing
flat-panel.
3.5 mm thick.



Code	Size
8002+	
009	9
013	13



Black Norma Red Green

DESERT BOOT | 2602

A blocker sole in Vibram Gumlite with the classic crepe design. Its qualities are lightness and grip.
Forepart: 9mm
Heel: 26mm



Code	Size
800203+	
412	41-42
434	43-44
456	45-46



Beige

MONTAGNA | 1149/132

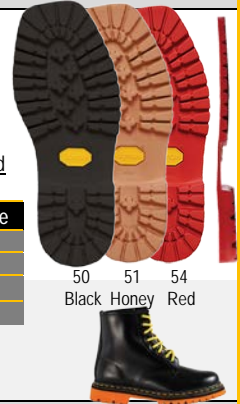
Thick commando rubber soles for shoe & boot repairs
Forepart: 12mm
Heel: 27mm

Style:1149
Black & Honey
8003+

Code	Size
356	35-36
378	37-38
390	39-40
412	41-42 (Honey)
434	43-44 (Honey)
456	45-46 (Honey)
478	47-48 (Honey)

Style:132
Honey & Red
8003+

Code	Size
508	8
510	10
512	12
514	14



50 Black 51 Honey 54 Red

FOURA | 1202

A versatile all-purpose outdoor option featuring a unique lug construction.

Black only. 9mm thick, 18mm lip.

800090+

Code	Size
036	36
038	38
040	40
042	42
044	44
046	46



MINI RIPPLE | 342C

Rubber compound.
7.4mm thick.

8004+

Code	Size
007	7.5
009	9
010	10.5
012	12.5



00 Black 02 Grey 04 Red 06 White 09 Camo (7.5 di)



PREDATOR | 625K

Running Sole.
Designed for hiking.
6.4mm thick.

8000+

Code	Size
006	6 (Black only)
008	8
010	10
012	12



70 Black 73 Black/Gum



ZEGAMA | 1443S/1474S

On rock climbing approach shoes. 6mm thick.

1443S
50 Black

Code	Size
800150+	
008	8
010	10
012	12
014	14



1474S
54 Red 57 Green

Code	Size
1474S 800154/57+	
424	42-44



NEW YORK | 2074

A rubber blocker whose casual design is perfectly mixed with a fashionable line.
Forepart: 5.3mm thick
Heel: 6.4mm thick

8004+

Code	Size
006	6 (Black only)
008	8 (Black only)
010	10
012	12



80 Black 89 Eco



NEW BOULDER | 885K

The unique circular lug design on the New Boulder is great for climbing and seasonal climates. The MegaGrip compound used is rugged and durable.
4.2mm thick.

8000+

Code	Size
009	9.5 (Red only)
013	13



82 Grey 84 Red



Toll Free: 1-800-663-9893

*All volume prices are based on same size, thickness and colour, except volume assorted prices: same group. Standard shipping terms apply. Prices subject to change without notice.

LIENZ | 2094

A dress option. Thin, trimmable, has a defined heel construction on most dress shoes.

Forepart: 5.8mm thick
Heel: 19.6mm thick



8003+

Code	Size
009	9-10
011	11-12



10 Black 14 Red 16 Cream

FRIEDRICH | 1442

A highly adaptive sole that is most commonly applied to a nice lifestyle option. 3.7mm thick.



8002+

Code	Size
424	42-44
502	50-52

90 Black Brown 93 Flint 98 Hazelnut

FLAT | 417K

A flat broad template sole in 5mm two color compound soft rubber. Excellent grip. 3.5mm thick.



8003+

Code	Size
006	6
009	9
013	13



00 Black 03 Black / Gum White 06

ETON | 2055S

Ideal for the production of footwear with classic constructions.

Forepart: 5.8mm thick
Heel: 8.5mm thick

8001+
SOLES 60
HEELS 70

Code	Size
056	5-6
078	7-8
090	9-10
112	11-12
134	13-14



MARMALODA | 171C

A nice variation of our classic heritage Montagna sole, a bit thinner and lighter. It usually serves itself better in a more fashion / lifestyle application on Men's boots.

Forepart: 15.9mm thick
Heel: 9mm thick

8001+

Code	Size
067	6.5-7.5
089	8 - 9
113	11.5-13
135	13.5-15 (Amber only)



24 Red 26 White 29 Amber



MISTER TANK | 1249

A nice blend of Carrarmato heritage meets new age recycled sole design. It is manufactured using EcoStep compound with lighter weight as well. Eco / Brown only. Forepart: 11.6mm thick Heel: 28.6mm thick

800029+

Code	Size
075	7.5
095	9.5
115	11.5
135	13.5



ACQUA | 2900

Made from a minimum of 30% recycled rubber. High-quality compound formulation. Embodies Vibram's dedication to environmental conservation. 5.3mm thick.

800118+

Code	Size
392	39-42
436	43-46



Brown

CHRISTY THICK | 377K

Improved slip resistance and cushioning capabilities. It's lightness and durability are significant for shoes, and orthopaedic footwear.

Forepart: 12.7mm thick
Heel: 23.8mm thick

8004+

Code	Size
006	6 (Black, White)
008	8 (Red, White, Green)
010	10
012	12
014	14 (Black, White)



60 Black 64 Red 66 White 67 Green 69 Camo



BOLOGNA | 810K

The Bologna is a blown rubber sole in a variety of colors to enhance your personal style. Forepart: 8mm thick Heel: 25.4mm thick

8005+

Code	Size
412	41-42
434	43-44
470	47



00 Black 09 Brown 03 Blue 06 White



ROCCIA | 528K

The classic "construction boot" sole. It is a lighter, less durable option than your typical work zone boot.

Forepart: 10.2mm thick
Heel: 25.6mm thick

8004+

Code	Size
005	5-6
007	7-8
010	10.5
012	12.5
014	14.5



30 Black 36 White

CHRISTY CAMP MOC | 950B

Rubber soles. The pattern is viewable not only on the bottom but on the lateral sidewall of the shoe.

Forepart: 9mm thick
Heel: 14.3mm thick

8004+

Code	Size
006	6
008	8
010	10
012	12
014	14



20 Black 26 White

